



**40 Penwortham Hall Gardens, Preston, PR1 9TG**

**£80,000**

Bradley Taylor Properties are offering this ground floor, over 55s, 2 bedroom flat for sale. What an amazing, ground floor, retirement flat! This is a unique property, firstly the layout is very spacious. The flat features its own entrance to the rear with a lovely patio area.

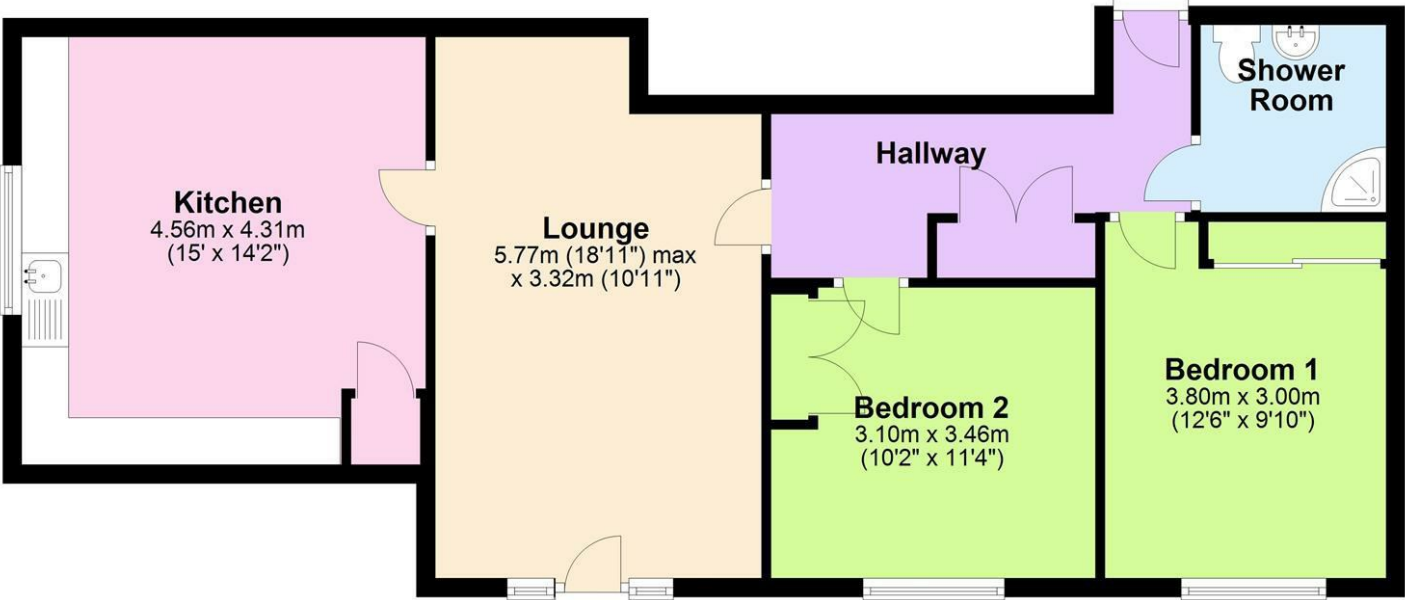
Featuring a large shower room that has recently been refurbished. There are 2 double bedrooms with windows overlooking the amazing gardens. The living space has a very social feel. There is a lounge area with a rear door to the patio and gardens. The lounge has enough space for a dining table. This leads through to a large fitted kitchen again with plenty of space for a dining table. This is available to over 55s, the property is 75% shared ownership with a service charge. Please get in touch for more details.

This is one of the biggest layouts in the building with its own private rear entrance through the lovely rear garden. Please get in touch for more details or to arrange a viewing. As this is a retirement property the flat is subject to certain criteria, please get in touch for more info.

Floor Plan

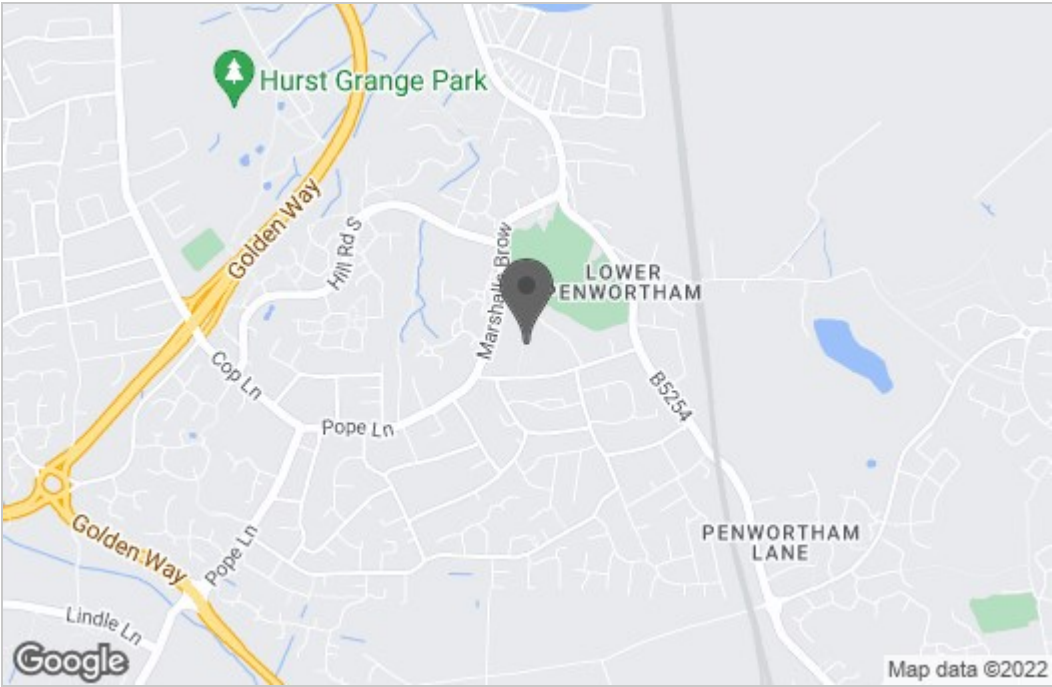
Ground Floor

Approx. 74.8 sq. metres (804.8 sq. feet)

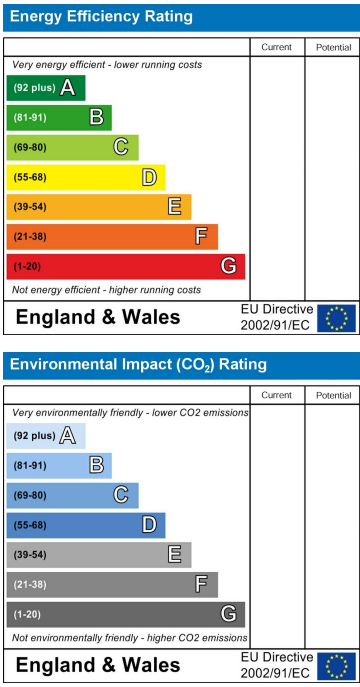


Total area: approx. 74.8 sq. metres (804.8 sq. feet)

Area Map



Energy Efficiency Graph



These particulars, whilst believed to be accurate are set out as a general outline only for guidance and do not constitute any part of an offer or contract. Intending purchasers should not rely on them as statements of representation of fact, but must satisfy themselves by inspection or otherwise as to their accuracy. No person in this firms employment has the authority to make or give any representation or warranty in respect of the property.